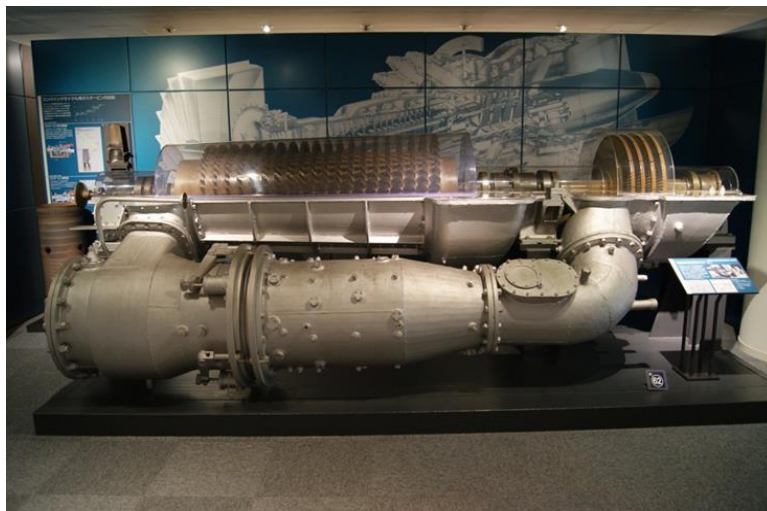


Registration No.	Number 00126		
Registration Date	September 10, 2013	Registration Category	Category 2

Name (Model, etc.)	The First Domestically Produced Gas Turbine for Electricity Generation		
Location	Yokohama City, Kanagawa Pref		
	TEPCO Electric Power Historical Museum		
Owner (Custodian)	Owner: National Maritime Research Institute Custodian: Tokyo Electric Power Company Holdings, Incorporated		
Manufacturer (Company)	Ishikawajima Shibaura Turbine Co., Ltd. (now Toshiba Corporation)		
Year Manufactured	1949		
Year First Appeared	1943		
Reason For Selection	The first domestically-produced gas turbine for generating electricity. In 1943, Ishikawajima Shibaura Turbine (now Toshiba) started developing such a turbine for a high-speed torpedo boat. After the war, the Railway Technical Research Institute started researching its use in a locomotive engine. Later, the Transportation Technical Research Institute (now the National Maritime Research Institute) took over, using it in gas turbine component technology research for supplying electricity to factories. It has a designed output of 1,640kW (2,200HP), an inlet temperature of 650°C, No.2 oil as fuel, a simple release cycle shaft, 20-stage axial flow compressor, 2 straight-through combustors and a 4-stage axial flow turbine and a thermal efficiency of around 13%.		
Registration Standard	1 - A		

Open/Closed to Public	Open to Public
-----------------------	----------------

Photo



Other useful information	
--------------------------	--