

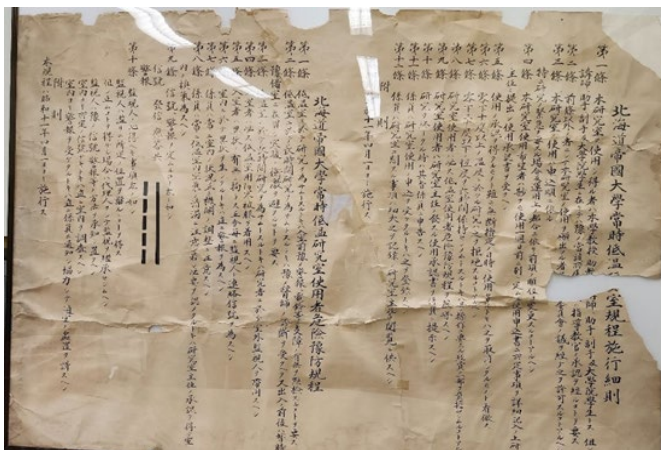
The global origin of snow and ice engineering and science

Registration No.	Number 00350		
Registration Date	September 12, 2023	Registration Category	Category 2

Name (Model, etc.)	Laboratory items on the world's first success in artificially producing snow crystal (1) Regulations Enforcement Bylaws of the Low Temperature Science Laboratory, Hokkaido Imperial University (2) Double-glass cylinder apparatus (3) Rabbit belly hair (4) Snow crystal replica
Location	Sapporo-shi, Hokkaido Institute of Low Temperature Science, Hokkaido University
Owner (Custodian)	Institute of Low Temperature Science, Hokkaido University
Manufacturer (Company)	Hokkaido University
Year Manufactured	(1) 1936 (2) Around 1992 (3) Unknown (4) Around 1954
Year first appeared	1936
Reason For Selection	These are the items from the laboratory that succeeded in creating the world's first artificial snow crystal. The Regulations Enforcement Bylaws of the Low Temperature Science Laboratory, Hokkaido Imperial University were posted in the laboratory at the time the experiments were conducted. The double-glass cylinder apparatus was made in-house factory at Hokkaido University, and the dimensions and shape were accurately reproduced based on documents and other sources. They were used for replication experiments at the opening of the Nakaya Ukichiro Museum of Snow and Ice in 1994. The materials preserved include the belly hair of rabbits used in experiments at the Institute of Low Temperature and Dr. Ukichiro Nakaya's own made snow crystal forms fixed in resin. It is significant as the starting point for snow and ice science worldwide.
Registration Standard	1-B (Show a uniquely Japanese scientific or technological development from an international perspective.) 1-C (Contributed to the creation of a new scientific or technological field.)

Open/Closed to Public	Open to Public
-----------------------	----------------

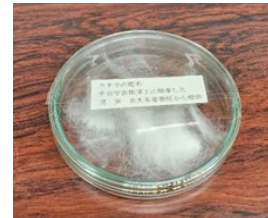
Photo



(1)



(2)



(3)



(4)

Other useful information